

PUDORYS - 1:100

Architectural drawing showing a building facade and floor plan. The facade is labeled with elevations: +2,73, +2,98, +1,73, ±0,00, and -0,27. The floor plan shows a long, narrow building with various rooms and corridors. The drawing is labeled 'PUDORYS - 1:100'.

Technical drawing of a roof plan showing various roof sections with dimensions and labels. The drawing includes the following sections:

- Section 4:** A long rectangular section with a width of 1940 and a height of 190. Label: ④ ØR8-2320mm PO 150mm-10ks.
- Section 7:** A rectangular section with a width of 1190 and a height of 190. Label: ⑦ ØR8-1570mm PO 150mm-10ks.
- Section 5 (Left):** A rectangular section with a width of 440 and a height of 190. Label: ⑤ ØR8-820mm PO 150mm-10ks.
- Section 5 (Middle):** A rectangular section with a width of 440 and a height of 190. Label: ⑤ ØR8-820mm PO 150mm-10ks.
- Section 5 (Right):** A rectangular section with a width of 440 and a height of 190. Label: ⑤ ØR8-820mm PO 150mm-10ks.
- Section 6:** A long rectangular section with a width of 3690 and a height of 190. Label: ⑥ ØR8-4070mm PO 150mm-10ks.
- Section 8:** A long rectangular section with a width of 2690 and a height of 190. Label: ⑧ ØR8-3070mm PO 150mm-10ks.

⑨ 10R12 PO 50mm-CELKEM+15% = 259m, PŘESAHY 600mm

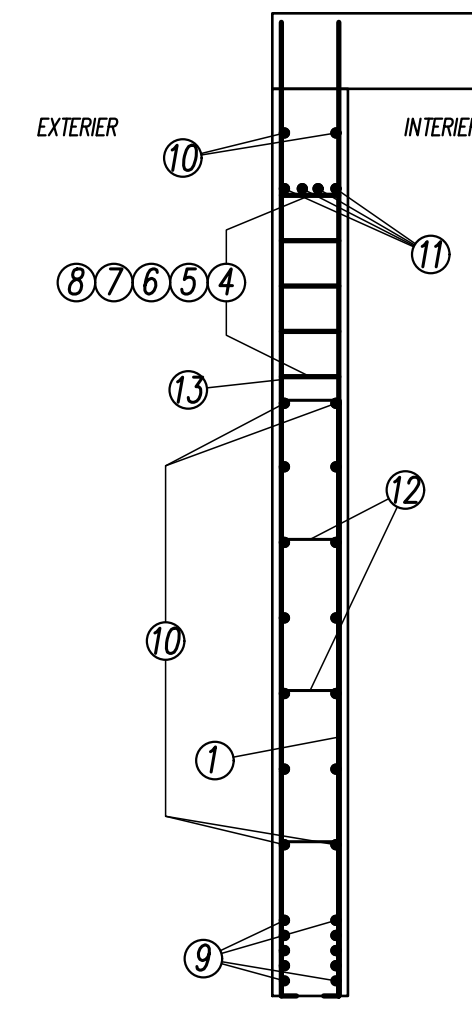
---

⑩ 8R8 PO 250mm-CELKEM+15% = 414m, PŘESAHY 400mm

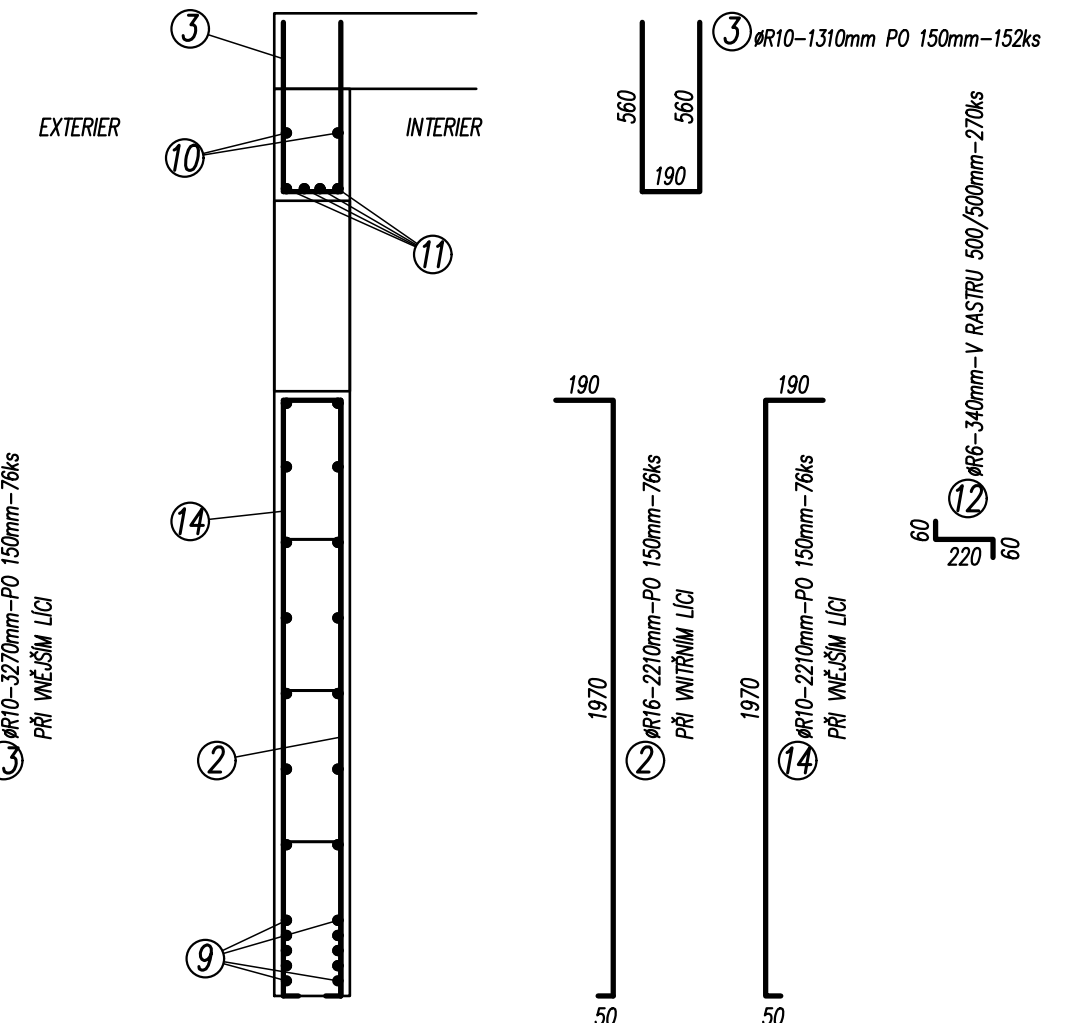
---

⑪ 4R16-CELKEM+15% = 104m, PŘESAHY 800mm

CELKOVÁ DÉLKA – 11,25m



CELKOVÁ DÉLKA – 11,25m



OZN.	PROFIL	DELKA	POČET	R6	R8	R10	R12	R16
		m	ks					
1	R16	3,27	76					250,0
2	R16	2,21	76					167,9
3	R10	1,31	152			199,12		
4	R8	2,32	10		23,20			
5	R8	0,82	30		24,60			
6	R8	4,07	10		40,70			
7	R8	1,57	10		15,70			
8	R8	3,07	10		30,70			
9	R12	259,00					259,00	
10	R8	414,00			414,00			
11	R16	104,00						104,0
12	R6	0,34	270	91,80				
13	R10	3,27	76			250,04		
14	R10	2,21	76			167,96		
DELKA (PLOCHA) m (m2)				91,80	548,90	617,12	259,00	522,0
VÁHA / m (m2) kg				0,222	0,395	0,617	0,888	1,57
VÁHA CELKEM kg				20,38	216,82	380,77	230,00	823,7

BETON : C30/37  
VÝZTUŽ : B500B  
KRYTÍ VÝZTUŽE : 30mm

ZODP. STATIK ING. ZMRZLÝ	NOVOSTAVBA PROVOZNI OBKEKT PELHŘIMOVSKE VODARENSKE SRO	ZAK. CÍSLO 019-2025-02-27	DATUM 04/04/2025
VYPRACOVAL ING. ZMRZLÝ	VÝZTUŽ STĚNY W-11	MĚŘÍTKO 1:25, 1:100	Č. VÝKR. 09